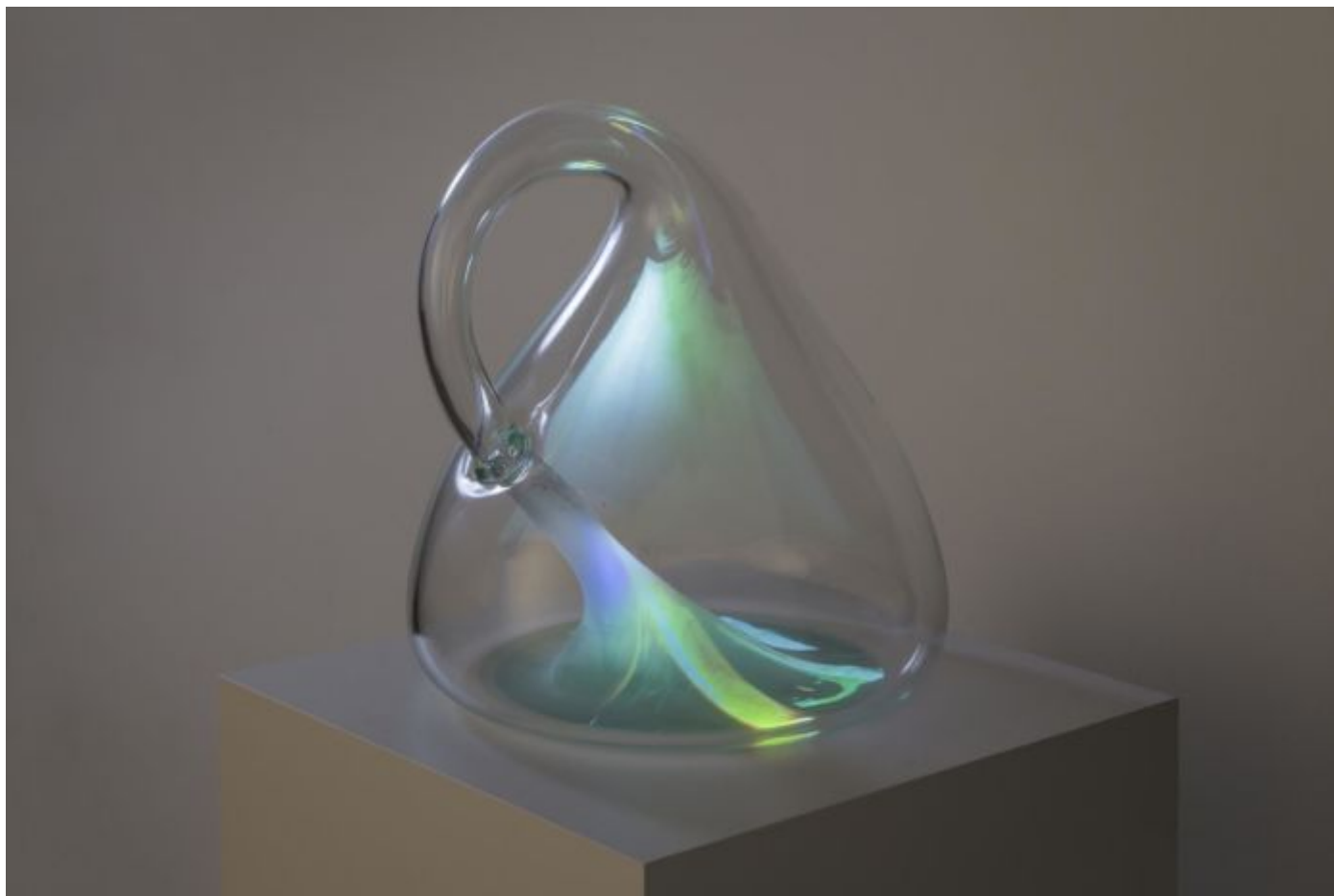


Gary Hill from Lia Rumma. A depth charge

by **Geneva Bria** - 7 April 2015

Lia Rumma Gallery, Milan - until April 30th 2015. The Milanese space turns into a dark and, at the same time, shiny container. At his third solo exhibition in the gallery, the first in Naples and the second in Milan, the Californian artist sets up combinations of materials and psychic alterations.



Gary Hill, *Klein Bottle*, 2014

The title of **Gary Hill** 's third solo show (Santa Monica, 1951) by Lia Rumma appeals to a military expression, " *Depth Charge* ", "deep charge". *Depth Charge* (2009-12) is also the work that gives the key to the exhibition, in which the artist combines two previous works: the projection is in fact a reference to *Varese 360* , in which the composition, *Un Grande Sommeil Noir* (1906) by Edgard Varèse, is played by the musician / composer Bill Frisell on electric guitar, while the five monitors on the ground project *The Psychedelic Gedankenexperiment*, place where the artist creates a trace of the psychic alterations due to the intake of LSD, lysergic acid diethylamide. But the real transmedia center of the route, which begins as a building covering, is represented by two recent works: *Klein Bottle* and *Pacifier*. Two interventions whose ontological and material nature seems to come from alchemical visions, apparently detonating.