

MARSHMALLOW LASER FEAST  
*Entwined*

January 25 - March 8, 2025



bitforms gallery

# bitforms gallery



*Breathing with the Forest*, installation view, bitforms gallery, New York

## MARSHMALLOW LASER FEAST

### *Entwined*

January 25 - March 8, 2025

Opening Reception: Saturday, January 25, 4-6 PM

*Entwined* is the first US solo presentation of artworks by Marshmallow Laser Feast (MLF) and their first exhibition with bitforms gallery. The exhibition traces the artist collective's focus on human relationships with natural environments through the growth cycles and natural rhythms of plant and animal life. *Entwined* opens with a visual analogy for the cyclical harmony of nature. In *Breath Cycles*, a pair of lungs form onscreen with the cadence of an inhale and exhale. As they disappear, a tree takes shape, extending from trunk to branches. Humans exhale carbon dioxide while trees exhale oxygen—a biological exchange the artists identify as a poetic testament to the interconnectedness of all living beings. *Breath Cycles* gestures towards the intricate likenesses of tree branches and lung bronchi, highlighting the delicate link of interdependence that sustains life.

# bitforms gallery

*In the Eyes of the Animal* invites viewers to experience the forest through the sensory perspectives of woodland species. Each generative composition highlights the unique ways creatures such as a mosquito, dragonfly, and owl perceive their surroundings. These species have evolved heightened senses to navigate their environments: the owl's binocular vision, the mosquito's ability to detect CO<sub>2</sub>, and the dragonfly's UV-sensitive, 360-degree compound eyes. The series portrays these animals in a timeless exploration of the forest, offering a glimpse into their extraordinary sensory worlds. Even with our most advanced tools, we cannot fully uncover how these remarkable beings perceive their world. The artwork serves as an invitation—a bridge between our imagination and their *umwelt*.

In the book *Radical Botany*, Antonia Szabari and Natania Meeker write, "Plants are alive, yet they do not present us with the same impression of life that animals do. Are we, as the victims of plant blindness, simply unable to notice their liveliness, or are they so different from us that we have to invent new ways of seeing and apprehending them?" This question resonates deeply with MLF, inspiring their exploration of the unseen worlds pulsating within vegetal life and their efforts to make this hidden vibrancy visible through their work. *The Sanctuary of the Unseen Forest* is centered around a Ceiba Pentandra tree growing in the Amazon Rainforest. In 2020, the MLF team traveled to collect volumetric data, field recordings, and ecological surveys of a Ceiba tree. *The Sanctuary of the Unseen Forest* galvanizes this captured information into effervescent layers of the circulating nutrients, carbon, and soil that make up the tree. These interconnected systems and cycles demonstrate how a stable climate is maintained. However, the Amazon is a threatened biome, and when these systems and cycles are threatened, so are we.

Our collective future depends on an understanding of the natural world —, a step beyond human senses — and *Breathing with the Forest* continues the synergy set forth in *Breath Cycles*. The work acts as a guided meditation that illuminates the reciprocity of the ecosystem. In a recreation of a real plot of Amazonian forest in its full majesty, surrounded by the rainforest's pulsing rhythms, visitors are encouraged to synchronise their breath with the audiovisual cues born of the forest. Through each inhale and exhale, *Breathing with the Forest* nurtures interdependency with the more-than-human world.

In the age of climate change, reveling in the simple act of breathing can be a thought engagement with the Anthropocene. Exhibited works seek to make visible the link between plants and humans through breath. In the mirroring of our cardiovascular systems, reflected symbiosis, and attuned perceptions, Marshmallow Laser Feast offers a shift of daily perception and a reminder of our reciprocal relationship within the web of life.

---

MARSHMALLOW LASER FEAST (Barnaby Steel b. 1978, Ersin Han Ersin b. 1984, Robin McNicholas b. 1979) is an experiential artist collective. They believe in the power of stories to tickle senses and shift perceptions. Their work takes people on a multi-sensory journey to where imagination and information collide.

From coders to poets, chemists to ventriloquists, brands to institutions, they collaborate with specialists in all disciplines. To explore new forms of culture, interrogate our relationship with the world around us and leave a glittery slug trail as they journey through the cosmos. They tell stories that untangle, entangle and flavour our reality, blurring the lines between art, immersive experiences, XR and film.

Alive in galleries, museums, public spaces, parks, nature reserves and the metaverse, their work is grounded in research. Designed to carve out space to expose, explore and expand our relationship with the living world.

MLF has exhibited internationally at institutions including; ACMI, Barbican Centre, Saatchi Gallery, YCAM, DDB Seoul, Sundance Film Festival, Aviva Studios, Quartier des Spectacles, Montreal, SXSW, Phi Centre and Lisbon Architectural Triennale.

Their works have been featured in publications such as; the Guardian, New Scientist, Wired, Independent, Creative Review and more.

@marshmallowlaserfeast | marshmallowlaserfeast.com

---

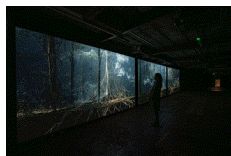
Founded in 2001, bitforms gallery represents established, mid-career, and emerging artists critically engaged with new technologies. Spanning the rich history of media art through its current developments, the gallery's program offers an incisive perspective on the fields of digital, internet, time-based, and new media art forms. For press inquiries, please contact [info@bitforms.art](mailto:info@bitforms.art) or call (212) 366-6939.

# bitforms gallery



Marshmallow Laser Feast  
*Breath Cycles*, 2018  
Video (color, sound)  
Dimensions variable, Portrait or landscape orientation  
5 min 24 sec, loop  
Edition of 5, 2 AP

\$ 30,000.00  
screen additional



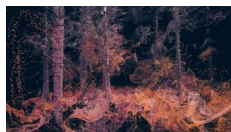
Marshmallow Laser Feast  
*Breathing with the Forest*, 2023  
Video (color, sound)  
Dimensions variable, Landscape orientation  
4 min, loop  
Edition of 5, 2 AP

\$ 40,000.00  
screen additional



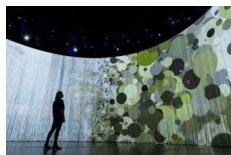
Marshmallow Laser Feast  
*In the Eyes of the Animal: Dragonfly*, 2015-2023  
Custom software (color, sound)  
Dimensions variable, Landscape orientation

\$ 40,000.00  
screen additional



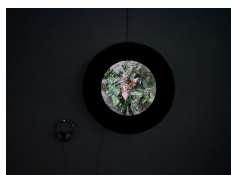
Marshmallow Laser Feast  
*In the Eyes of the Animal: Mosquito*, 2015-2023  
Custom software (color, sound)  
Dimensions variable, Landscape orientation

\$ 40,000.00  
screen additional



Marshmallow Laser Feast  
*In the Eyes of the Animal: Owl*, 2015-2023  
Custom software (color, sound)  
Dimensions variable, Landscape orientation

\$ 40,000.00  
screen additional



Marshmallow Laser Feast  
*Lupuna: Becoming*, 2024  
Video (color, sound)  
Dimensions variable, Square  
5 min, loop  
Edition of 5, 2 AP

\$ 34,000.00  
screen and custom  
frame included



Marshmallow Laser Feast  
*Sanctuary of the Unseen Forest, Vertical Edition*, 2022  
Video (color, sound)  
Dimensions variable, Portrait orientation  
4 min, loop  
Edition of 5, 2 AP (#1/5)

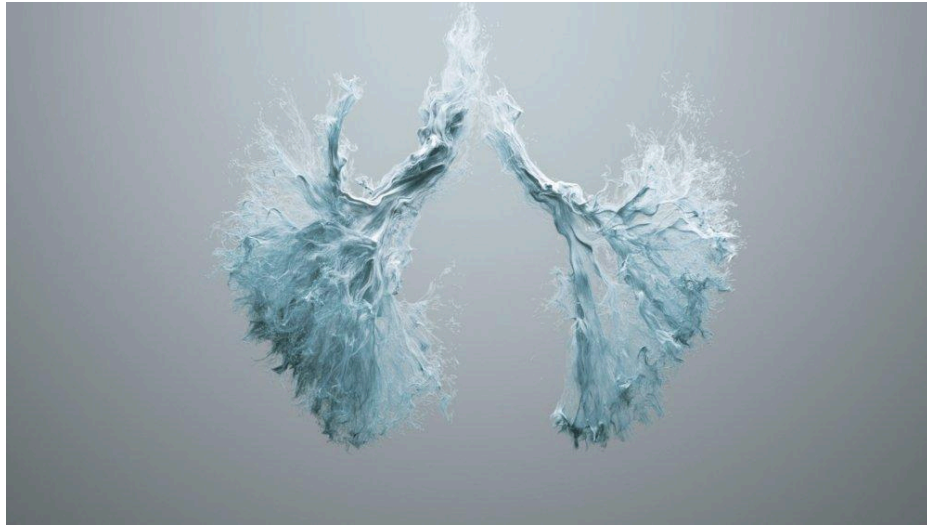
\$ 25,000.00  
screen additional



Marshmallow Laser Feast  
*We Live in an Ocean of Air, Horizontal Edition*, 2016  
Video (color, sound)  
Dimensions variable, Landscape orientation  
11 min 20 sec, loop  
Edition of 5, 2 AP

\$ 25,000.00  
screen additional

# bitforms gallery



Marshmallow Laser Feast  
*Breath Cycles*, 2018  
Video (color, sound)  
Dimensions variable, Portrait or landscape orientation  
5 min 24 sec, loop  
Edition 1 of 5, 2 AP

\$ 30,000.00, screen additional

Video Documentation: <https://vimeo.com/938745523>

Marshmallow Laser Feast's *Breath Cycles* explores the mesmerizing symphony of fractal patterns that bind the living tapestry of our planet, integrating the kinship between the arboreal and the pulmonary. The video piece weaves together the intricate likenesses of tree branches and lung bronchi, highlighting the delicate link of interdependence that sustains life.

The artwork serves as a poignant reminder of the cyclical harmony in nature; where trees exhale the oxygen vital for our breath, our lungs in turn release carbon dioxide, a fundamental ingredient for photosynthesis. This exchange is not merely biological but a poetic testament to the interconnectedness of all living beings, encapsulated in the mesmerizing beauty of fractal repetition.

# bitforms gallery



Marshmallow Laser Feast

*Breathing with the Forest*, 2023

Video (color, sound)

Dimensions variable, Landscape orientation

4 min, loop

Edition 1 of 5, 2 AP

\$ 40,000.00, screen additional

Video Documentation (excerpt 1): <https://vimeo.com/927689270>

Video Documentation (excerpt 2): <https://vimeo.com/927690954>

Conceived as an open-eyed meditation, *Breathing with the Forest* immerses visitors in the damp light and rippling soundscape of the Colombian Amazon before a majestic Capinuri tree (*Maquira coriacea*) and its surrounding species. By recreating a real plot of Amazonian forest in its full majesty and astounding detail, the installation reveals the beauty and fragility of these tropical environments as it brings to light the many delicate symbiotic relationships that exist between major kingdoms of life. Surrounded by the rainforest's pulsing rhythms, viewers come to synchronize their breath with audiovisual cues born of the forest, and a hidden network of interconnections emerge. In this moment of communion, *Breathing with the Forest* nurtures a sense of connection with the more-than-human world.

# bitforms gallery



Marshmallow Laser Feast

*In the Eyes of the Animal: Dragonfly*, 2015-2023

Custom software (color, sound)

Dimensions variable, Landscape orientation

Unique (as generative)

\$ 40,000.00, screen additional

Video Documentation: <https://vimeo.com/927711821>

*In the Eyes of the Animal* is a series that invites audiences to explore the forest through the eyes of woodland species. Generative video editions of *In the Eyes of the Animal* are derivatives of the original mixed reality work, transformed into screen-based media. Each edition represents a woodland species in its environment, showcasing a unique visual interpretation of the same forest through the sensory world of a mosquito, dragonfly, frog and owl.

Each species evolved to perceive their surroundings with senses such as UV, CO<sub>2</sub>, or even higher frame rates that are beyond the limits of human senses. The series consists of four generative video editions, each featuring an animal as it explores the forest, unbounded by time. This continuous presentation offers a novel perspective into their world.

# bitforms gallery



Marshmallow Laser Feast

*In the Eyes of the Animal: Mosquito*, 2015-2023

Custom software (color, sound)

Dimensions variable, Landscape orientation

Unique (as generative)

\$ 40,000.00, screen additional

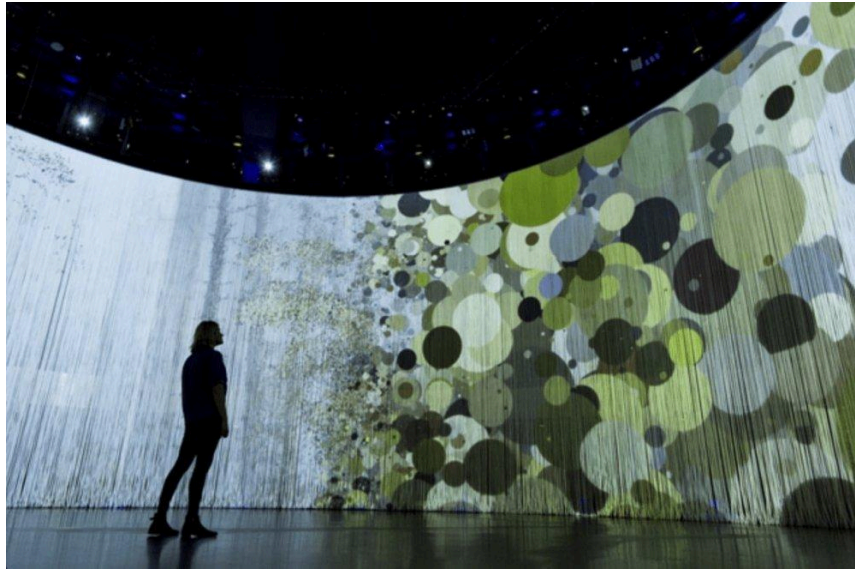
Video Documentation: <https://vimeo.com/927695666>

*In the Eyes of the Animal* is a series that invites audiences to explore the forest through the eyes of woodland species. Generative video editions of *In the Eyes of the Animal* are derivatives of the original mixed reality work, transformed into screen-based media. Each edition represents a woodland species in its environment, showcasing a unique visual interpretation of the same forest through the sensory world of a mosquito, dragonfly, frog and owl.

Each species evolved to perceive their surroundings with senses such as UV, CO<sub>2</sub>, or even higher frame rates that are beyond the limits of human senses. The series consists of four generative video editions, each featuring an animal as it explores the forest, unbounded by time. This continuous presentation offers a novel perspective into their world.



# bitforms gallery



Marshmallow Laser Feast

*In the Eyes of the Animal: Owl*, 2015-2023

Custom software (color, sound)

Dimensions variable, Landscape orientation

Unique (as generative)

\$ 40,000.00, screen additional

Video Documentation: <https://vimeo.com/927699692>

*In the Eyes of the Animal* is MLF's multisensory mixed reality installation where audiences explore the forest through the eyes of four woodland species. It is an artistic interpretation of the woodland species' umwelt, highlighting the sensory perceptions of different species.

Generative video editions of *In the Eyes of the Animal* are derivatives of the original mixed reality work, transformed into screen-based media. Each edition represents a woodland species in its environment, showcasing a unique visual interpretation of the same forest through the sensory world of a mosquito, dragonfly, frog and owl.

Each species evolved to perceive their surroundings with senses such as UV, CO<sub>2</sub>, or even higher frame rates that are beyond the limits of human senses. The series consists of four generative video editions, each featuring an animal as it explores the forest, unbounded by time. This continuous presentation offers a novel perspective into their world.

# bitforms gallery



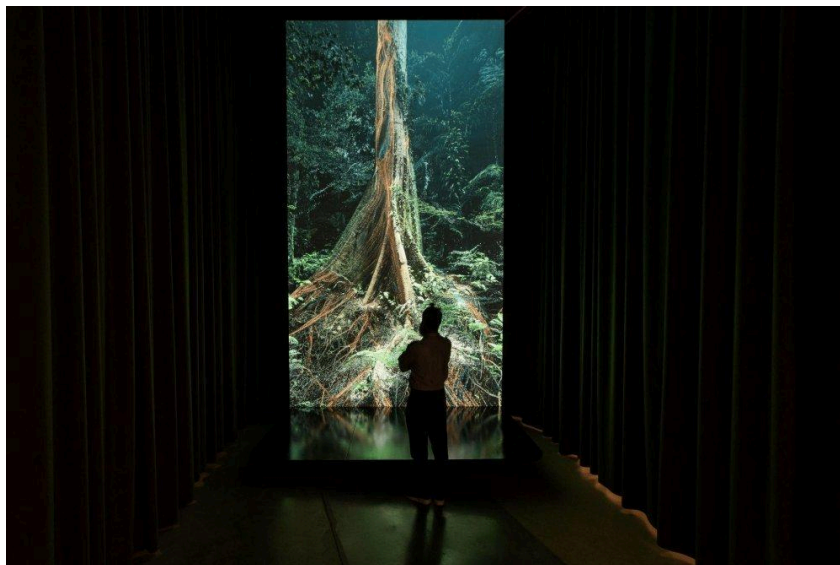
Marshmallow Laser Feast  
*Lupuna: Becoming*, 2024  
Video (color, sound)  
Dimensions variable, Square  
5 min, loop  
Edition 1 of 5, 2 AP

\$ 34,000.00, screen and custom frame included

Video Documentation: <https://vimeo.com/927651260>

*Lupuna* is a video that simulates the experience of lying on the forest floor through three levels of magnification. The Lupuna tree and its symbiont, The Queen of the Night flower, are first observed as the sunrise filters through the leaves of the awakening rainforest. The artwork meticulously reconstructs a microcosm from the Amazonian rainforest, showcasing its grandeur and complex details. It highlights the allure and vulnerability of the tropical ecosystem, shedding light on the intricate symbiotic connections among various life kingdoms. This dynamic portrayal reflects the continuous cycle of life and activity that characterizes the rainforest throughout the day.

# bitforms gallery



Marshmallow Laser Feast  
*Sanctuary of the Unseen Forest, Vertical Edition, 2022*  
Video (color, sound)  
Dimensions variable, Portrait orientation  
4 min, loop  
Edition 1 of 5, 2 AP (#1/5)

\$ 25,000.00, screen additional

Video Documentation: <https://vimeo.com/933840363>

*The Sanctuary of the Unseen Forest* is a video installation that creates a moment of awe that occurs when we embrace the presence of a majestic being, a giant Ceiba Pentandra (4°02'06.8 "S 70°04'44.1"W) from the Colombian Amazon. The project promotes radical thinking on a new ecology in the age of the Anthropocene.

The project offers a shift to our daily perception, as the victims of plant blindness, we are simply unable to notice plant kingdom's liveliness, they are so different from us that we have to invent new ways of seeing and apprehending them.\*

*The Sanctuary of the Unseen Forest* seeks to foster a sense of belonging to a more-than-human world. As we peer through the layers of the tree, we uncover the vibrancy of the life that is flowing through and beyond its body. We are also intimately connected with the trees. They can be seen as an extension of our lungs in some ways. The oxygen they exhale flows into our tree-like lungs, flowing from our heart Center outward, through fractal branching arteries to feed every cell in our body.

The flow of nutrients in its phloem pulse to your heartbeat and reverberate through the room. This pulsing draws you in on a journey from crown to the soil, climaxing in rivers of carbon in the soil. Here we meet the woven mycelial bridge between land and the sky: in this network of mycorrhizal fungi we see that no self is bounded – we are all porous, enmeshed and entangled.

# bitforms gallery



Marshmallow Laser Feast  
*We Live in an Ocean of Air, Horizontal Edition*, 2016  
Video (color, sound)  
Dimensions variable, Landscape orientation  
11 min 20 sec, loop  
Edition 1 of 5, 2 AP

\$ 25,000.00, screen additional

Video Documentation: <https://vimeo.com/938664183>

*We Live in an Ocean of Air* illuminates the invisible- but fundamental- connection that ties animal and plant, human and natural world, into a wondrous rhythm which underpins life on Earth.

Set in the Sequoia National Forest in Northern California, the video artwork follows a single drop of water from the roots of a giant sequoia tree to majestic canopy, the journey draws a parallel between the oxygen we need to survive and the life-giving properties of forests. Meditative in both pacing and subject, the video artwork erases the boundaries between the body and the air surrounding us to show how natural processes such as respiration form a symbiotic relationship between humanity and organic life. Lidar scan and ecological survey conducted in Sequoia National Park in California in 2016.